

# Word of the Day

## Autumn Term 2024

Week 10 – 11th November 2024



*'Words unlock the doors to a world of understanding...'*

# This Week's Words

Grasshopper

**shadow**

**excellent**

**strange**

**final**

**swing**

Shinobi

**weary**

**undulate**

**unsure**

**stain**

**nuisance**



**VOCABULARY NINJA**

# Grasshopper (Tier 1)

**shadow**

**excellent**

**strange**

**final**

**swing**



**VOCABULARY NINJA**

# Shinobi (Tier 2)

**weary**

**undulate**

**unsure**

**stain**

**nuisance**



**VOCABULARY NINJA**



# Grasshopper Word of the Day

Word of the Day:

**shadow**  
(*shad-ow*)

Word Class  
(noun)

Pronunciation / Syllables

## Definition:

A shadow is a dark shape on a surface that is made when something stands between a light and the surface.



The **shadow** of the tree stretched across the playground.

Synonym:

gloom

shade

Antonym:

brightness

light

Prefix / Suffix:

over-

-s

Rhyme:

Link Word:

looming

faint



# Grasshopper Word of the Day

Word of the Day:

**excellent**  
(ex-cel-lent)

Word Class  
(adjective)

Pronunciation / Syllables

Definition:

Something that is excellent is very good indeed.



Mr Law told the class their work was **excellent**.

Synonym:

outstanding

superb

Antonym:

bad

poor

Prefix / Suffix:

-ly

Rhyme:

Link Word:

truly

undeniably



# Grasshopper Word of the Day

Word of the Day:

Pronunciation / Syllables

**strange**  
(*strange*)

Word Class  
(adjective)

Definition:

Something that is strange is unusual or unexpected, and makes you feel slightly nervous or afraid.



A **strange** noise came from the back of the classroom.

Synonym:

bizarre

peculiar

Antonym:

common

regular

Prefix / Suffix:

-er

-ly

Rhyme:

change

range

Link Word:

appear

remarkably



# Grasshopper Word of the Day

Word of the Day:

Pronunciation / Syllables

**final**  
(fi-nal)

Word Class  
(adjective)

Definition:

In a series of events, things, or people, the final one is the last one.



Mrs Tanner told the class their **final** test was on Friday.

Synonym:

ending

closing

Antonym:

beginning

opening

Prefix / Suffix:

non-

-ly

Rhyme:

vinyl

spinal

Link Word:

reach

ultimately



# Grasshopper Word of the Day

Word of the Day:

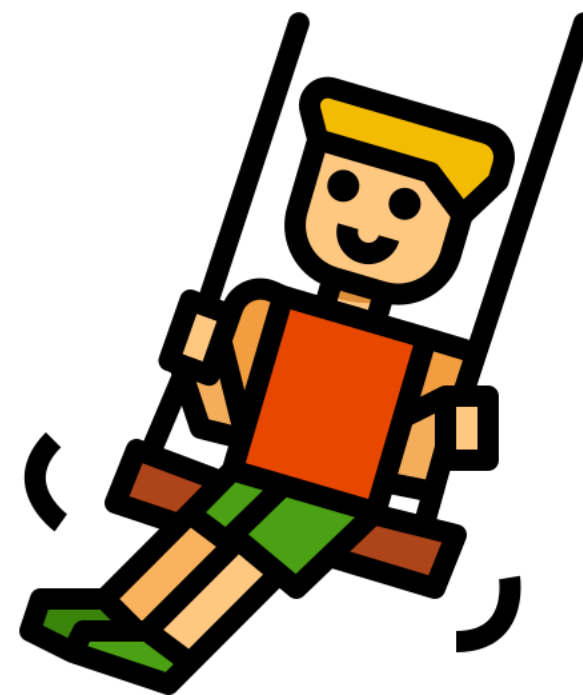
Pronunciation / Syllables

swing  
(swing)

Word Class  
(verb / noun)

Definition:

If something swings or if you swing it, it moves repeatedly backwards and forwards or from side to side.



Sonny loved to **swing** high in the playground.

Synonym:

lurch

sway

Antonym:

be still

stabilise

Prefix / Suffix:

up-

-ing

Rhyme:

thing

ring

Link Word:

gentle

powerful



# Shinobi Word of the Day

Word of the Day:

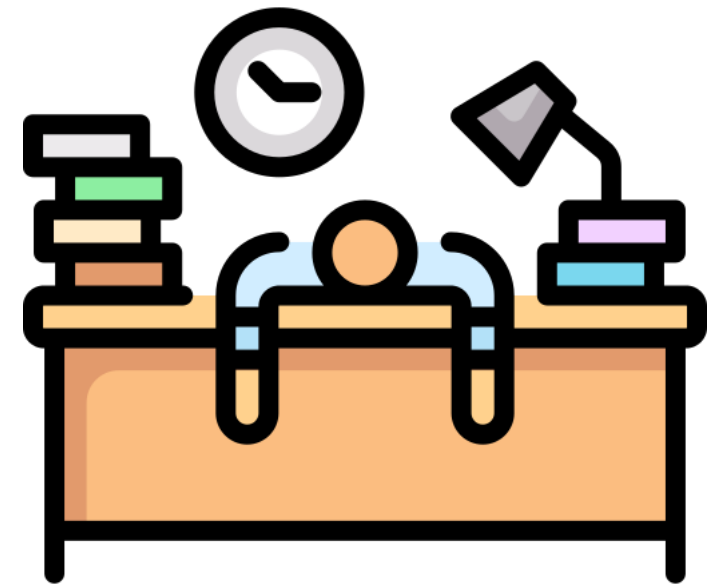
Pronunciation / Syllables

**weary**  
(wea-ry)

Word Class  
(adjective)

Definition:

If you are weary, you are very tired.



The class felt **weary** after a long day of learning.

Synonym:

exhausted

fatigued

Antonym:

energetic

lively

Prefix / Suffix:

-ing

Rhyme:

theory

eerie

Link Word:

feel

visibly



# Shinobi Word of the Day

Word Class  
(verb)

Word of the Day:

**undulate**  
(*un-du-late*)

Pronunciation / Syllables

## Definition:

Something that undulates has gentle curves or slopes, or moves gently and slowly up and down or from side to side in an attractive manner.



The waves seemed to **undulate** gently along the shore

Synonym:

billow

wobble

Antonym:

Prefix / Suffix:

-ed

-ing

Rhyme:

Link Word:

provide

naturally



# Shinobi Word of the Day

Word of the Day:

Pronunciation / Syllables

**unsure**  
(*un-sure*)

Word Class  
(adjective)

Definition:

If you are unsure about something,  
you feel uncertain about it.



Ayanshi was **unsure** of the answer in the test.

Synonym:

dubious

sceptical

Antonym:

certain

unwavering

Prefix / Suffix:

-ness

-ly

Rhyme:

pure

secure

Link Word:

clearly

completely



# Shinobi Word of the Day

Word Class  
(noun)

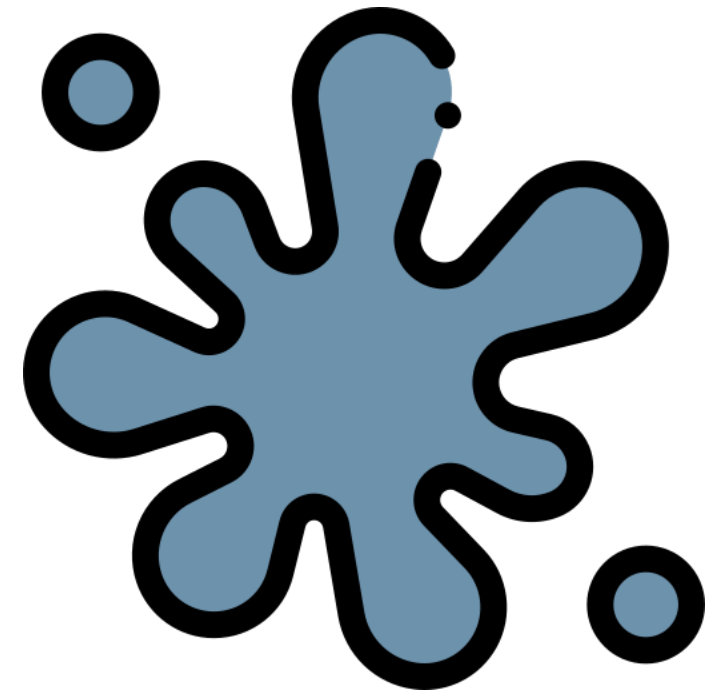
Word of the Day:

Pronunciation / Syllables

stain  
(*stain*)

Definition:

A stain is a mark on something that is difficult to remove.



Logan was unsure if the **stain** would come off the table.

Synonym:

blemish

smudge

Antonym:

clean

pure

Prefix / Suffix:

-ing

-ed

Rhyme:

again

pain

Link Word:

permanent

deep



# Shinobi Word of the Day

Word Class  
(noun)

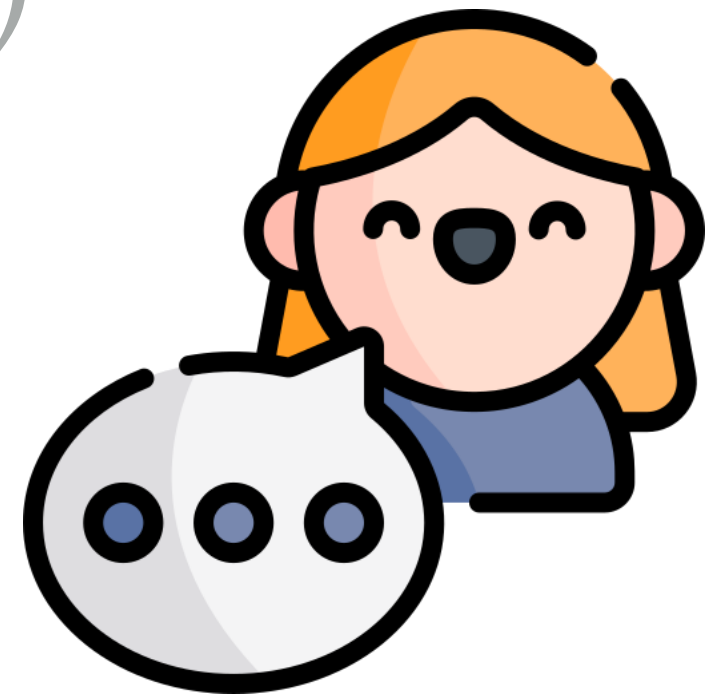
Word of the Day:

**nuisance**  
(*nui-sance*)

Pronunciation / Syllables

**Definition:**

If you say that someone or something is a nuisance, you mean that they annoy you or cause you a lot of problems.



Jen was being a **nuisance** by talking during the lesson.

**Synonym:**

irritant

pester

**Antonym:**

help

delight

**Prefix / Suffix**

-s

**Rhyme:**

**Link Word:**

persistent

small

# Vocabulary Laboratory



Describe / Definition:

Use it in a sentence:

**Focus Word** (write below):

**Word Class:**

**Synonyms:**

(words with same / similar meaning)

**Antonyms:**

(words with opposite meaning)

**Draw your sentence:**

**Rhymes:**

(words that sound the same)

**Link Words:**

(Example: football = pitch, team, player)

# Vocabulary Visualiser

Draw the  
**Grasshopper** words  
and bring them to life.



Word: shadow

Word: strange

Word: excellent

Word: swing



# Vocabulary Visualiser

Draw the **Shinobi**  
words and bring  
them to life.



Word: weary

Word: stain

Word: unsure

Word: nuisance



# Matching Meanings

Draw lines from the **Grasshopper** words to their definitions.



## Grasshopper Word

## Grasshopper Definitions

shadow

Something that is \*\*\* is very good indeed.



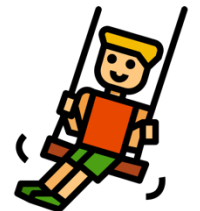
excellent

A \*\*\* is a dark shape on a surface that is made when something stands between a light and the surface.



strange

If something \*\*\* or if you \*\*\* it, it moves repeatedly backwards and forwards or from side to side from a fixed point.



final

Something that is \*\*\* is unusual or unexpected, and makes you feel slightly nervous or afraid.



swing

In a series of events, things, or people, the \*\*\* one is the last one.



# Matching Meanings

Draw lines from the **Shinobi** words to their definitions.

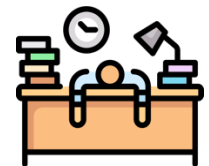


## Shinobi Word

## Shinobi Definitions

weary

If you are \*\*\*, you are very tired.



undulate

If you are \*\*\* about something, you feel uncertain about it.



unsure

A \*\*\* is a mark on something that is difficult to remove.



stain

If you say that someone or something is a \*\*\*, you mean that they annoy you or cause you a lot of problems.



nuisance

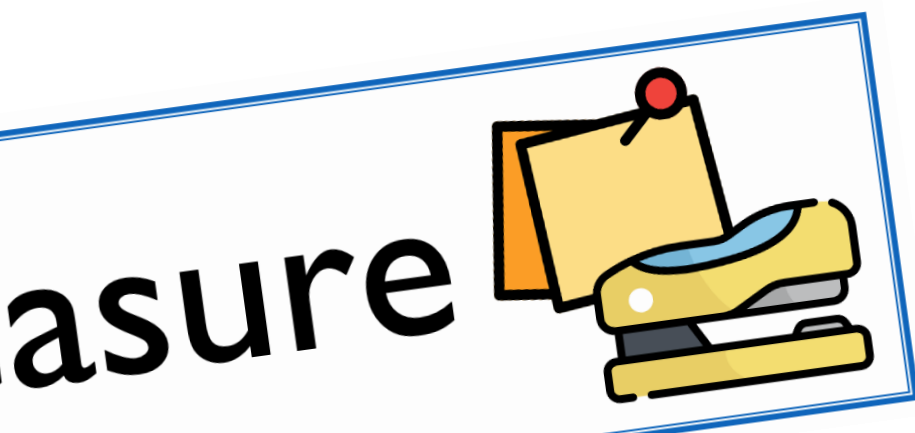
Something that \*\*\* has gentle curves or slopes, or moves gently and slowly up and down or from side to side in an attractive manner.





# Display Slips

The following slides are for classroom display. As you teach each Word of the Day, words can be displayed in the classroom to enable pupils to use the taught vocabulary in an independent manner.





shadow

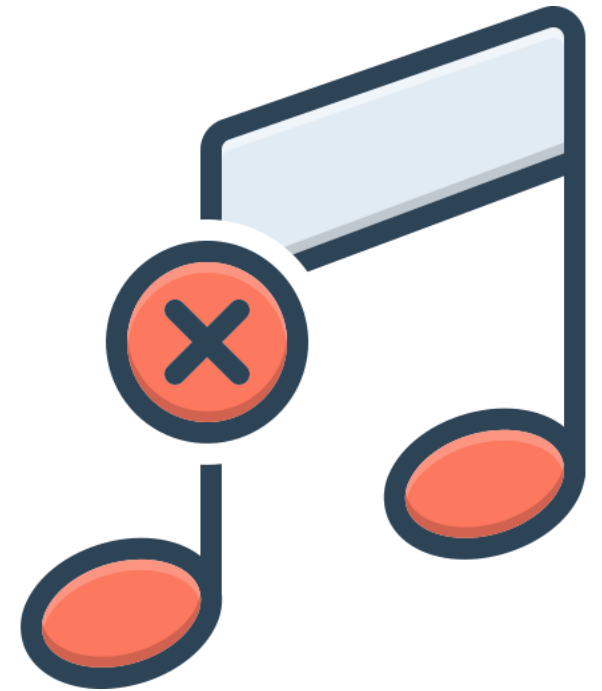


excellent





# strange

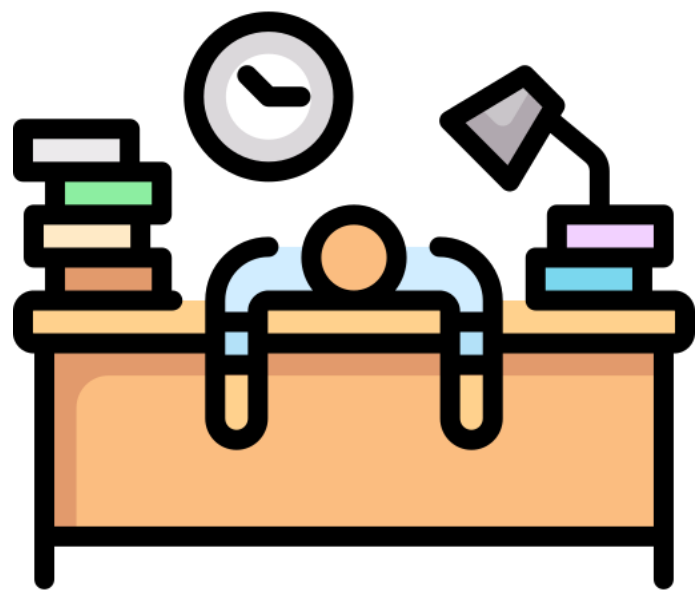
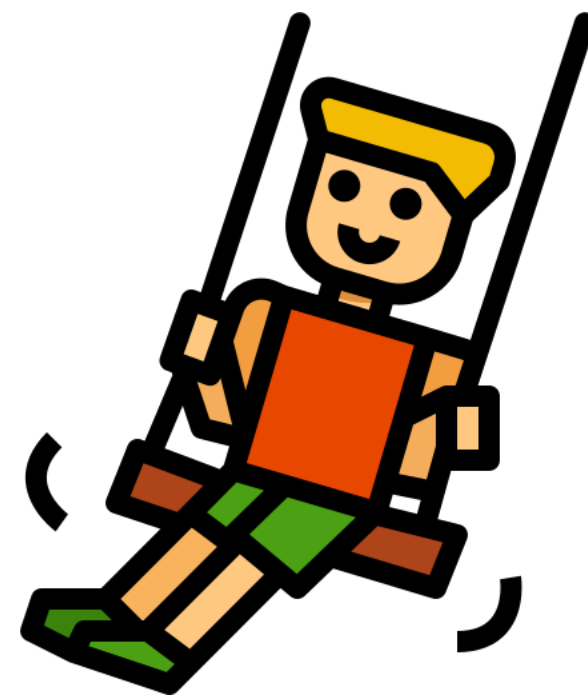


# final





# swing

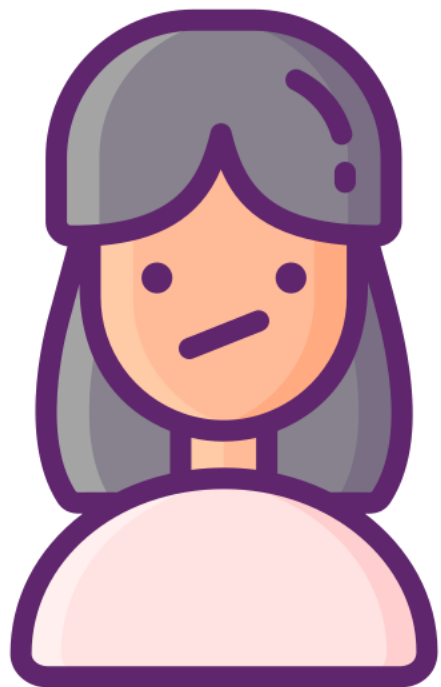


# weary





# undulate

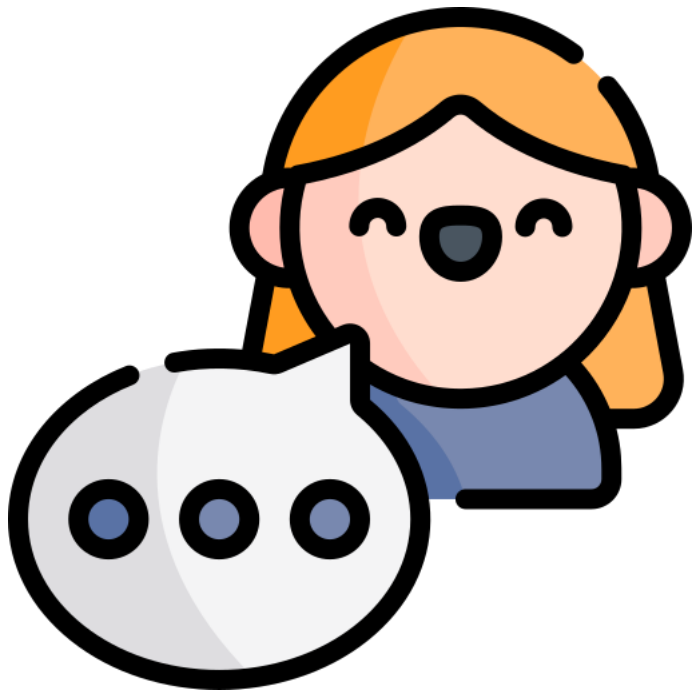
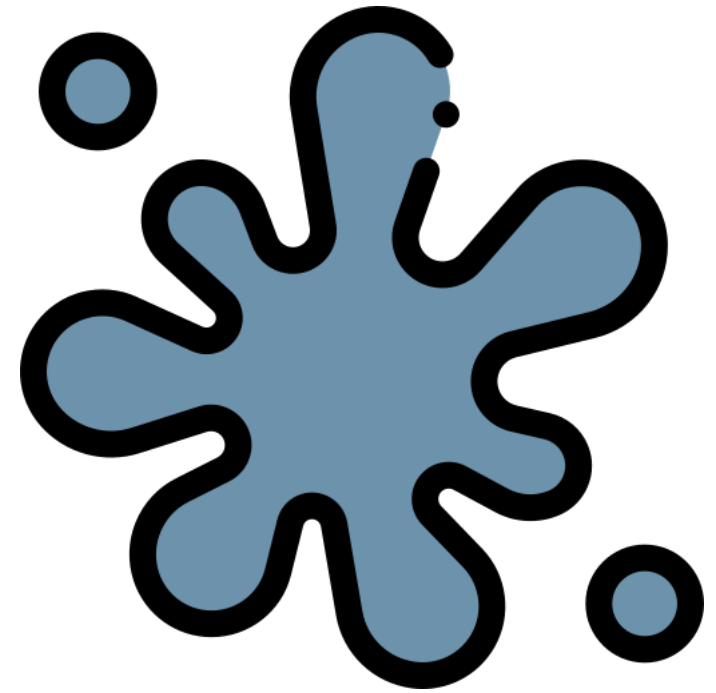


# unsure





stain



nuisance






# Font Variation

The following display slips contain the same words, but have a more regular font, which have a more regular formation of 'a' and 'g'. Futura is the name of the font.



worried



opini



asure





shadow



excellent





# strange

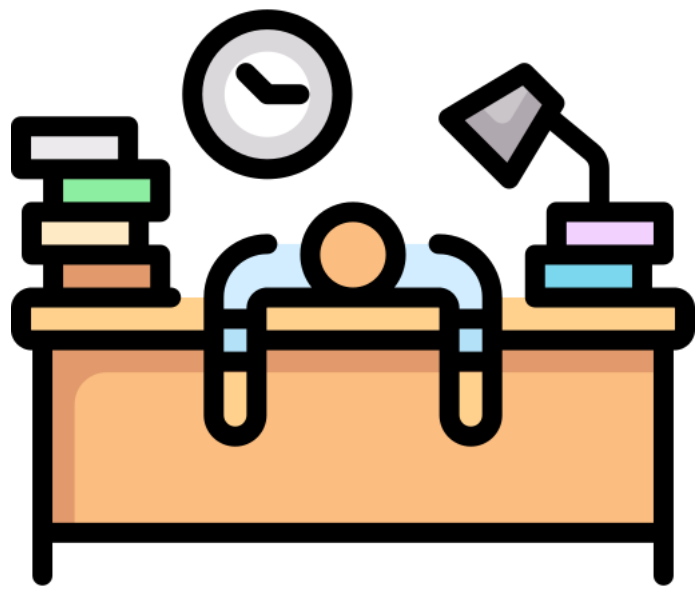
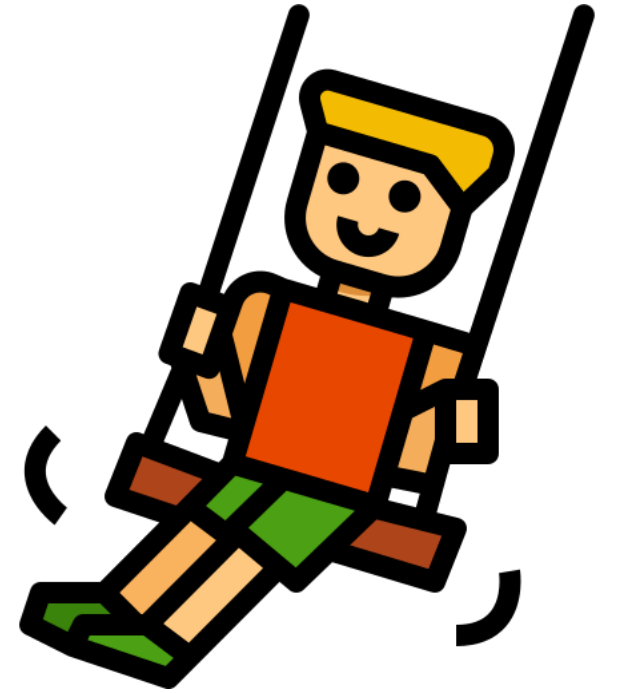


# final





# swing

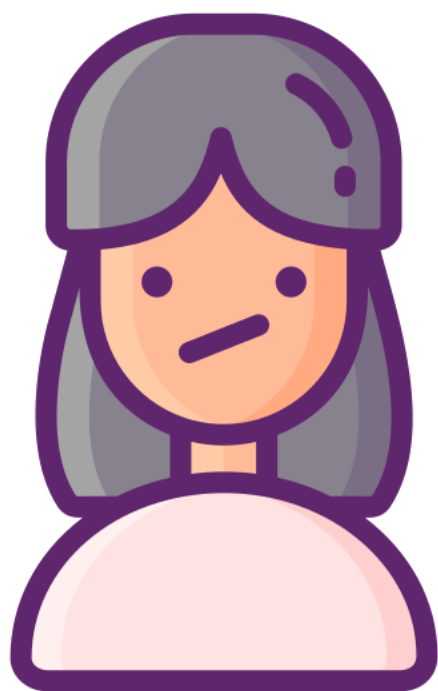


# weary





# undulate

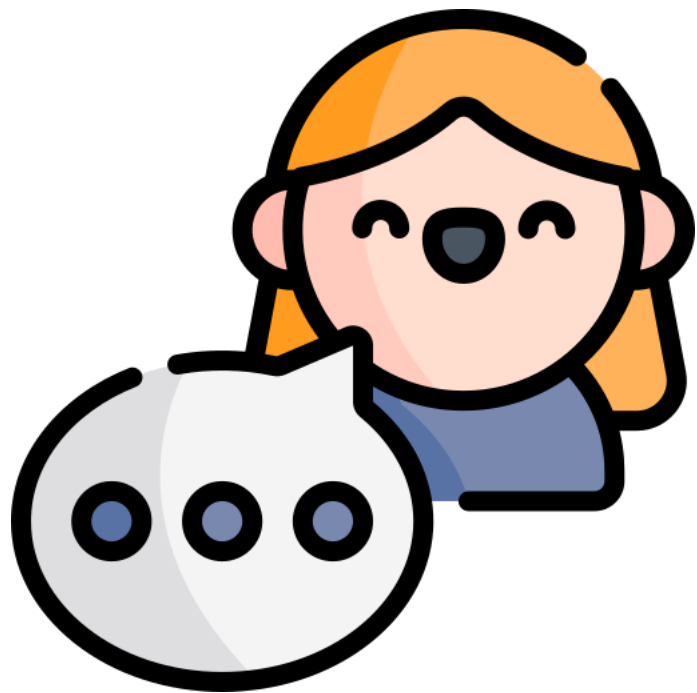
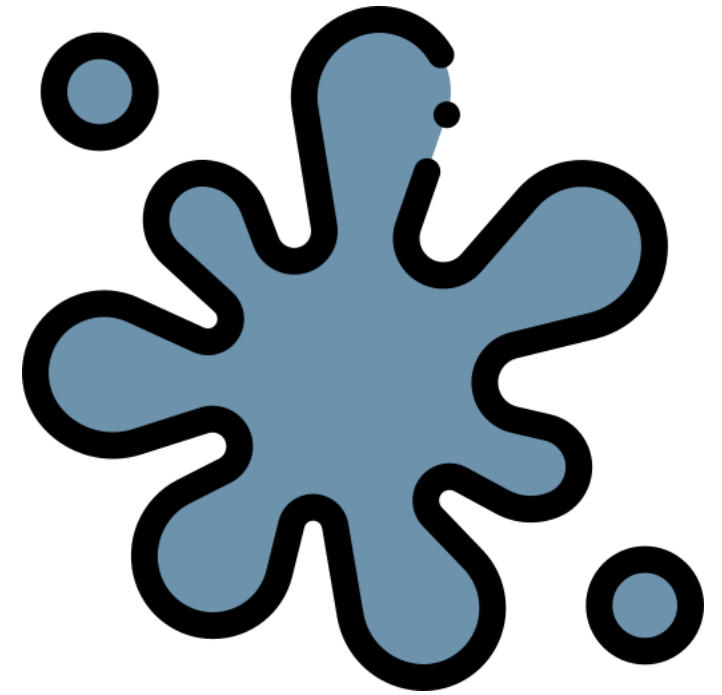


# unsure





stain



nuisance

